



COLLABORATIVE CONNECTIONS:
PARTNERING WITH CAREGIVERS
FOR SUCCESS

Dr. Oscar Harris
Nicole Jenkins-Rosenkrantz

Acknowledgement/Disclaimer

This project is supported by Grant #15PJDP-22-GK-03889-STOP awarded by the Office of Juvenile Justice and Delinquency Prevention (OJJDP), Office of Justice Programs, U.S. Department of Justice. The opinions, findings, and conclusions or recommendations expressed in this publication/program/exhibition are those of the author(s) and do not necessarily reflect those of the Department of Justice.





PRESENTERS

- Nicole Jenkins-Rosenkrantz
 - Dr. Oscar Harris

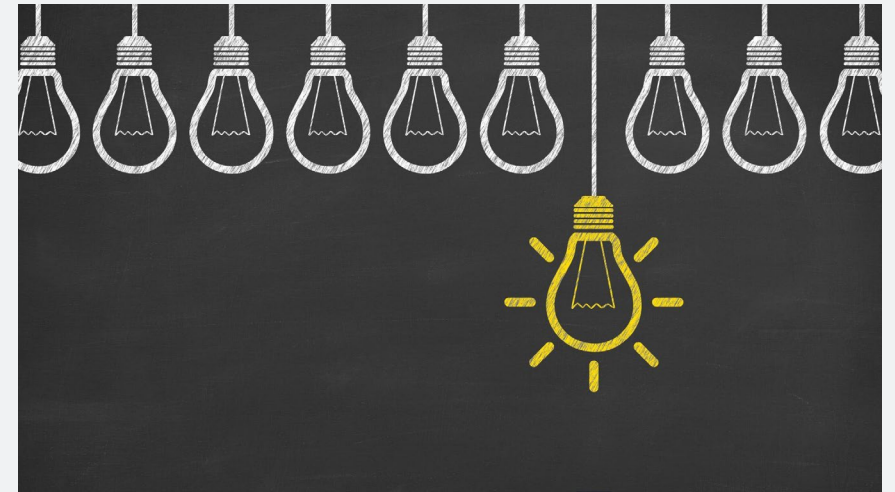
Agenda

- Explore relevant research
- Discover actionable strategies for fostering meaningful partnerships among stakeholders
- Delve into real-world examples and practical tips based on the research and professional experience



Learning Objectives

- Understand the significance of caregiver involvement in a child's educational journey
- Explore how to engage stakeholders to participate.
- Learn actionable strategies for fostering meaningful partnerships with caregivers
- Effective communication techniques
- Engagement approaches



Importance of Caregiver Involvement (The Why)

- Research findings reveal that caregiver involvement positively influences academic achievement, attendance, and overall student success



Research and Trends

Family Perceptions

School Staff Perceptions

Community
Organization Perceptions

Families Perception

Challenges in Collaboration: Dr. Smith highlights that families often face barriers such as language barriers, time constraints, and unfamiliarity with school systems when trying to collaborate effectively with school staff.

Alignment with Epstein's Framework: Despite these challenges, families value their role as partners in the educational process, aligned with Epstein's framework.

Effective Communication: Dr. Johnson's underscores the importance of effective communication channels established by schools, which resonates with Epstein's emphasis on communication as a cornerstone of family engagement.

School Staff Perception

Challenges in Collaboration: Dr. Anderson's research indicates that school staff often encounter challenges in reaching out to families, including differing cultural norms and varying levels of family engagement.

Alignment with Epstein's Framework: School staff perceive Epstein's framework as a valuable guide for enhancing family engagement, even as they navigate these challenges.

Supportive Learning Environment: Dr. Wilson purported that school staff perceive family involvement as essential to creating a supportive learning environment.

Community Organizations Perception



Challenges in Collaboration: Dr. Martinez's research suggests that community organizations may face challenges in coordinating efforts with schools due to differing priorities and limited resources.



Alignment with Epstein's Framework: Despite these challenges, community organizations acknowledge Epstein's framework as a valuable tool for fostering partnerships and addressing students' needs.



Inclusivity: Dr. Lee's findings indicate that community organizations value the inclusivity of Epstein's framework, encompassing diverse stakeholders in students' education.



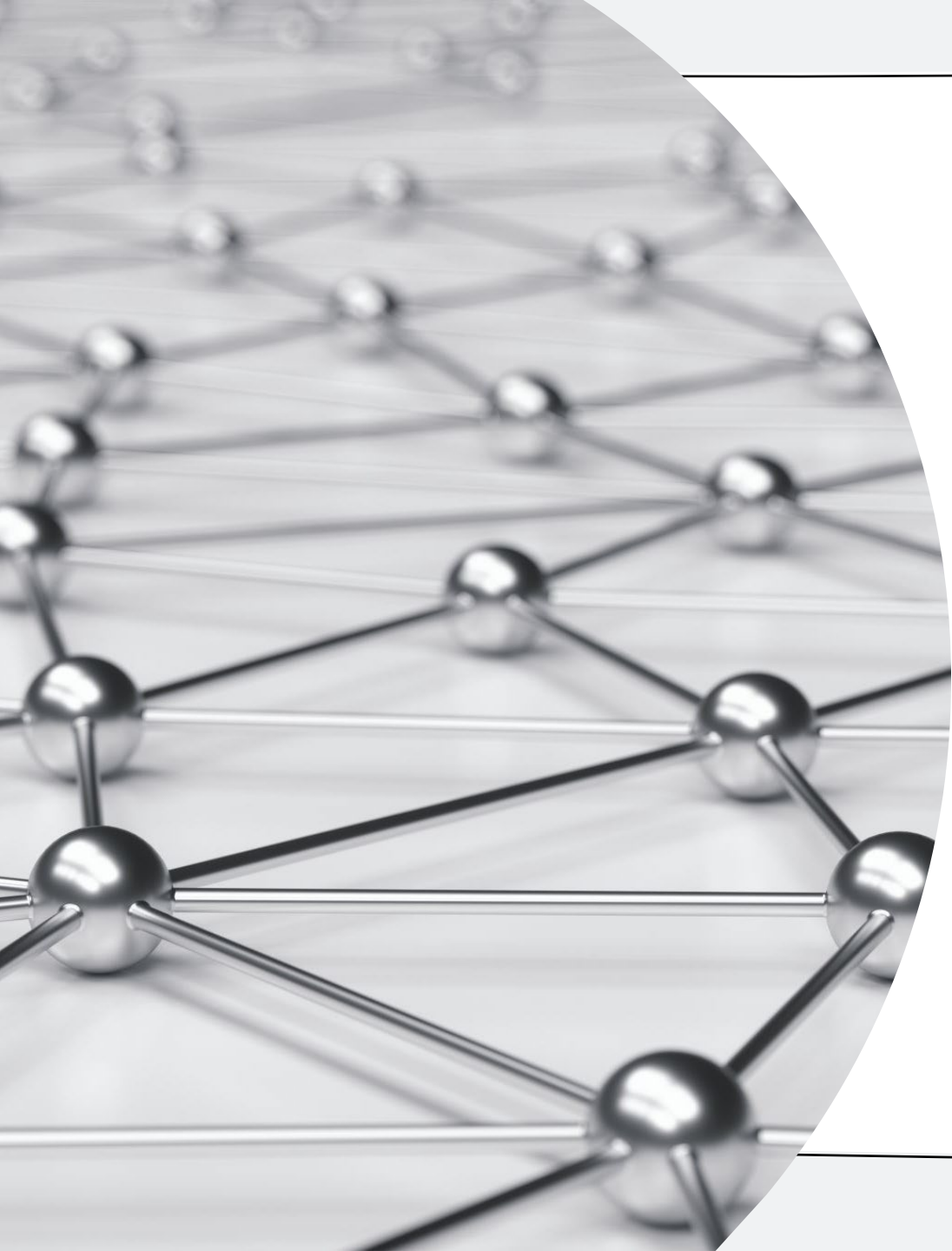
CHALLENGES IN PARTNERSHIPS

While collaborative partnerships between schools, caregivers and community partners are crucial, it's essential to acknowledge the challenges that can hinder their success.



CULTURAL AND LANGUAGE BARRIERS

"Cultural and language barriers can create misunderstandings and hinder the establishment of trust and collaboration between schools and caregivers."



LIMITED RESOURCES

Challenge: Research highlights the challenge of limited resources, both in schools, among caregivers and community partners.

"Resource constraints, such as time, financial resources, and access to support, can pose challenges for schools and caregivers in their partnership efforts."

A close-up photograph of a chessboard with several pieces. In the center, a dark wooden king piece stands prominently. To its left is a dark wooden rook, and to its right is a dark wooden pawn. In the foreground, a light-colored king piece lies on its side, suggesting a recent move or a checkmate. The background is softly blurred, showing more of the chessboard and a warm, golden light source. A light blue speech bubble with a black outline is positioned in the upper right, containing the title. A larger white speech bubble with a black outline is in the lower right, containing the main text and a quote.

MISMATCHED EXPECTATIONS

A common issue is mismatched expectations between schools, caregivers and community partners regarding their roles and responsibilities

"Unaligned expectations can lead to frustration and tension, preventing the establishment of productive partnerships."



LACK OF TRAINING AND SUPPORT

Research suggests that both educators, caregivers and community partners may lack adequate training and support to engage effectively in partnerships.

- The who, the what and how?

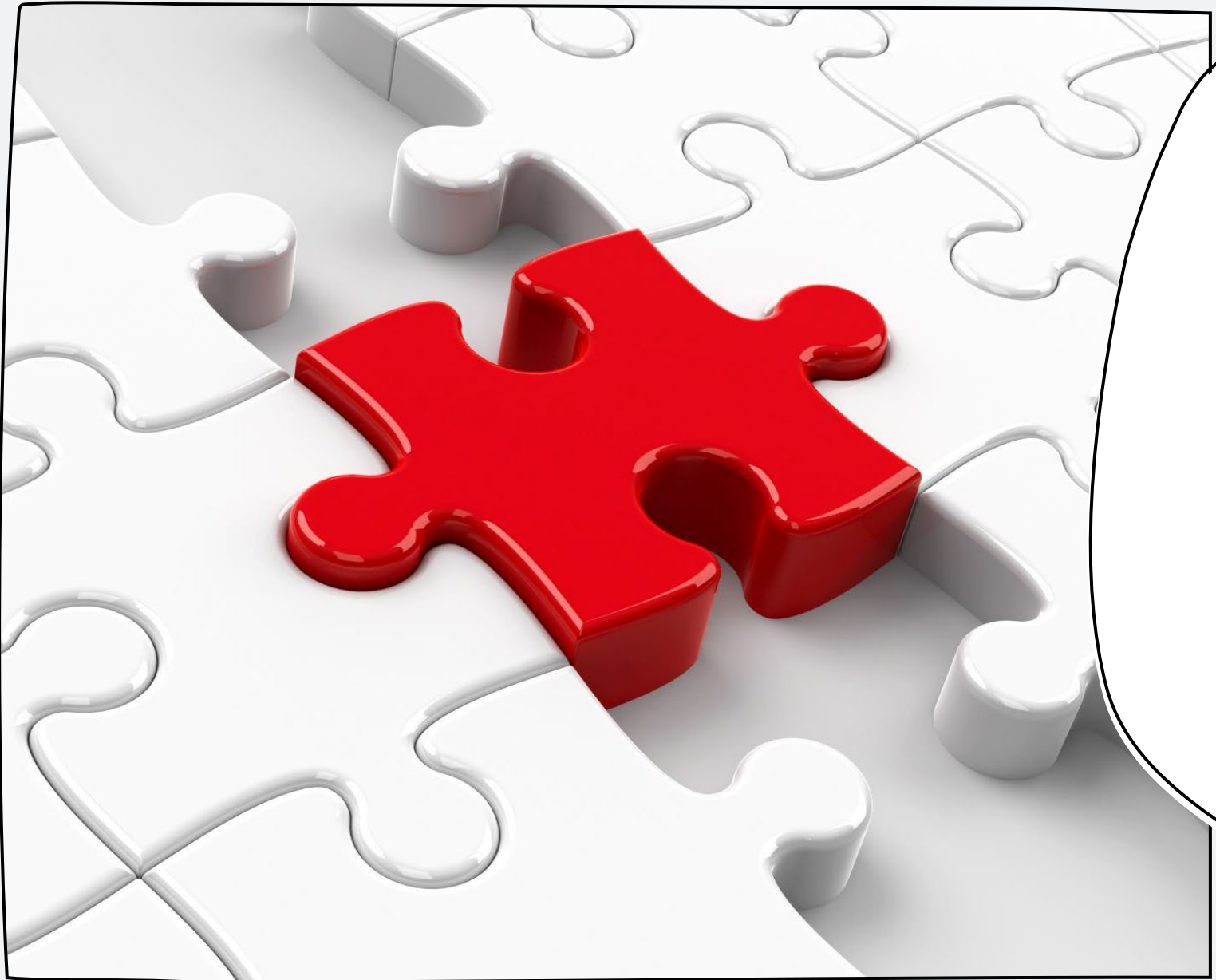
Key Strategies

Effective Communication

Engagement Approaches

Shared Vision

Collaboration Frameworks



EFFECTIVE COMMUNICATION

The cornerstone of successful
caregiver-school-community
partnerships

Techniques:

- Communication techniques
 - active listening
 - regular updates
 - feedback loops



ENGAGEMENT APPROACHES

Intentional and diverse approaches

- Parent-teacher conferences
 - workshops
 - online platforms
- Community Resource Fairs



SHARED VISION

Vision Development by Dr.
Karen Mapp :

- Collaboratively creating a vision for a child's education
 - fosters alignment and commitment among caregivers and educators
- Leads to a sense of purpose and direction

COMMUNITY
ORGANIZATIONS
AND SCHOOL
PARTNERSHIPS

Organizational
Cultural

Identifying
Mutual Benefits

Formalizing
Partnerships

Navigating Policy,
Procedures and
Bureaucracies.

ADOPT A FRAMEWORK

Establish a collaborative culture

- Build a shared language

To help all stakeholders better support each others' work

- Goals and objective of stakeholders becomes common knowledge

FRAMEWORKS

Epstein's Framework of Six Types of Parent Involvement

•**Overview:** Developed by Dr. Joyce Epstein, this widely recognized framework identifies six types of parent involvement: parenting, communicating, volunteering, learning at home, decision-making, and collaborating with the community. It emphasizes the importance of involving families in various aspects of their children's education, encouraging collaboration between schools, families, and communities.

Mapp's Dual Capacity-Building Framework

•**Overview:** Dr. Karen Mapp's framework focuses on building the capacity of both schools and families to engage in effective partnerships. It highlights the need for schools to develop strategies for involving families and for families to build their own capacity to support their children's learning. This framework underscores collaboration and mutual responsibility.

FRAMEWORK CONT.

Ishimura's Multifaceted Family Engagement Model

•**Overview:** Dr. Ann Ishimura's model takes a multifaceted approach to family engagement. It emphasizes the importance of understanding diverse family backgrounds and tailoring engagement strategies accordingly. This model recognizes that family engagement goes beyond school-based involvement and includes community and cultural factors.

Hoover-Dempsey and Sandler's Model of Parental Involvement

•**Overview:** Dr. Kathleen Hoover-Dempsey and Dr. Michael Sandler's model focuses on the role of parents' motivations and perceptions in their involvement in their children's education. It identifies sources of motivation and barriers to involvement, highlighting the significance of addressing parents' needs and concerns.

Q&A



CONTACT

OscarH@spokaneschools.org and
NicoleRo@spokaneschools.org



References

- 1.Harris, O. (2021). A Phenomenological Study of Epstein's Parental Involvement Framework With Middle-School English Language Learner (ELL) Teachers and Language Specialists. [Insert complete publication details here, such as the name of the journal, volume number, and page range.]
- 2.Smith, J. (2019). Barriers to Effective Family-School Collaboration in ELL Education. [Insert complete publication details here.]
- 3.Johnson, A. (2020). Effective Communication Strategies in Family-School Partnerships. [Insert complete publication details here.]
- 4.Anderson, R. (2018). Navigating Challenges in Family Engagement: Perspectives of School Staff in ELL Education. [Insert complete publication details here.]
- 5.Wilson, M. (2017). Creating a Supportive Learning Environment: School Staff Perceptions of Family Involvement in ELL Education. [Insert complete publication details here.]
- 6.Martinez, L. (2019). Community-School Collaboration Challenges in ELL Education. [Insert complete publication details here.]
- 7.Lee, C. (2020). Inclusivity and Collaborative Efforts in ELL Education: Perspectives from Community Organizations. [Insert complete publication details here.]

FRAMEWORK REFERENCES

1. Epstein, J. L. (1987). Toward a theory of family-school connections: Teacher practices and parent involvement. *American Journal of Education*, 3(2), 236-256.
2. Mapp, K. L., & Kuttner, P. J. (2013). Partners in education: A dual capacity-building framework for family–school partnerships. Harvard Family Research Project. Retrieved from [Insert URL if applicable].
3. Ishimura, A., & Gayles, J. G. (2015). Multifaceted Family Engagement: Perspectives of Urban High School Teachers. *Journal of School Leadership*, 25(2), 206-231.
4. Hoover-Dempsey, K. V., & Sandler, H. M. (1995). Parental involvement in children's education: Why does it make a difference? *Teachers College Record*, 97(2), 310-331.