



**Rural**  
VIOLENT CRIME  
REDUCTION INITIATIVE

# Rural Violent Crime Reduction Initiative - Rural Roundtable Peer Learning Event

---

*July 20, 2023*

# Acknowledgement/Disclaimer

This project is supported by Grant #5PBJA-21-GK-03941-RURA awarded by the Office of Bureau of Justice Assistance, Office of Justice Programs, U.S. Department of Justice. The opinions, findings, and conclusions or recommendations expressed in this publication/program/exhibition are those of the author(s) and do not necessarily reflect those of the Department of Justice.

# Event Logistics

- Event is being recorded
- Event survey
- Questions and Answers



# Agenda

- Crime Data Gathering & Analysis Presentation
- RVCRI Grantee Presentations
  - Oneida, New York Police Department
  - Ridge Spring, South Carolina Police Department
- Facilitated Discussion and Q&A
- Announcements



# Using Data-Driven Strategies to Address Violent Crime

---

*Kerry Yerico, Senior Program Manager*

# Data-Driven Policing

---

# The SARA Model



SCANNING



ANALYSIS



RESPONSE



ASSESSMENT

# Types of Data

Computer-Aided Dispatch (CAD)

Records Management System (RMS)

Vehicle Stops

Field Contacts

Public Information

311

Automated License Plate Reader  
(ALPR)





# Crime Analysis Overview

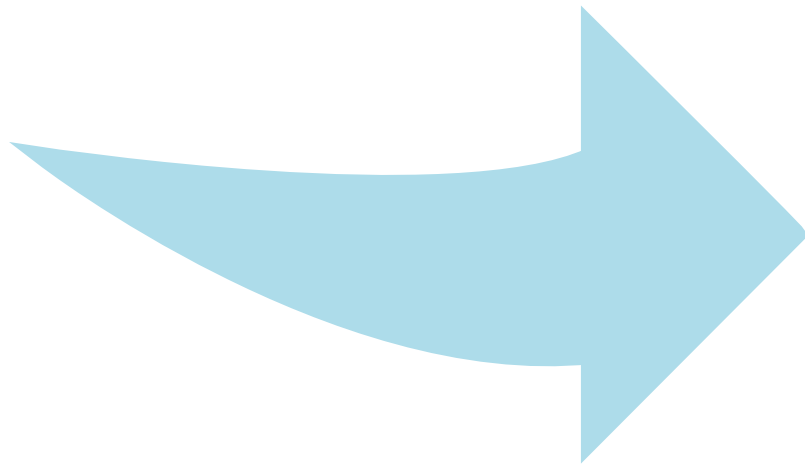
---

# Strategic Crime Analysis



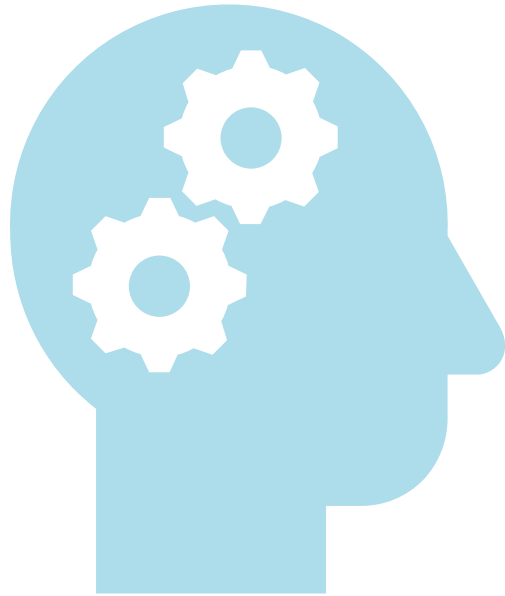
- Focus on long-term planning and accountability measures
- Utilize research for benchmarking & best practices
- Geographic Information Systems (GIS) to analyze hotspots of criminal activity
- Reliance on statistics to support CompStat

# Tactical Crime Analysis



- Focus on short-term operational deployment
- Target-based crime locations
- Civilian analysts based in a fusion center alongside sworn officers and outside partners
- Real-time response to violent incidents

# Criminal Intelligence Analysis

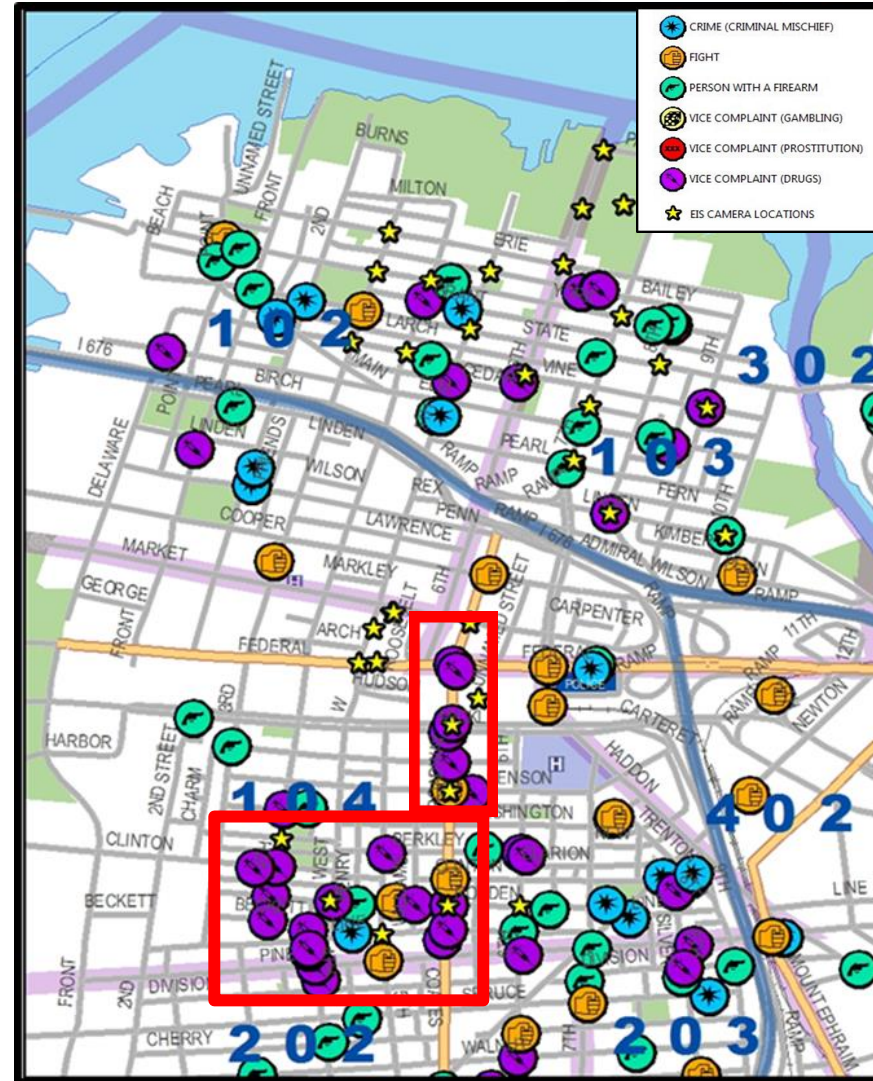


- Crime and intelligence analysts to support patrol and investigative departments
- Real-time analytical response to gun violence
- Social media monitoring
- Overdose trends in relation to drug activity
- Ballistic linkage

# Decrease Violent Crime

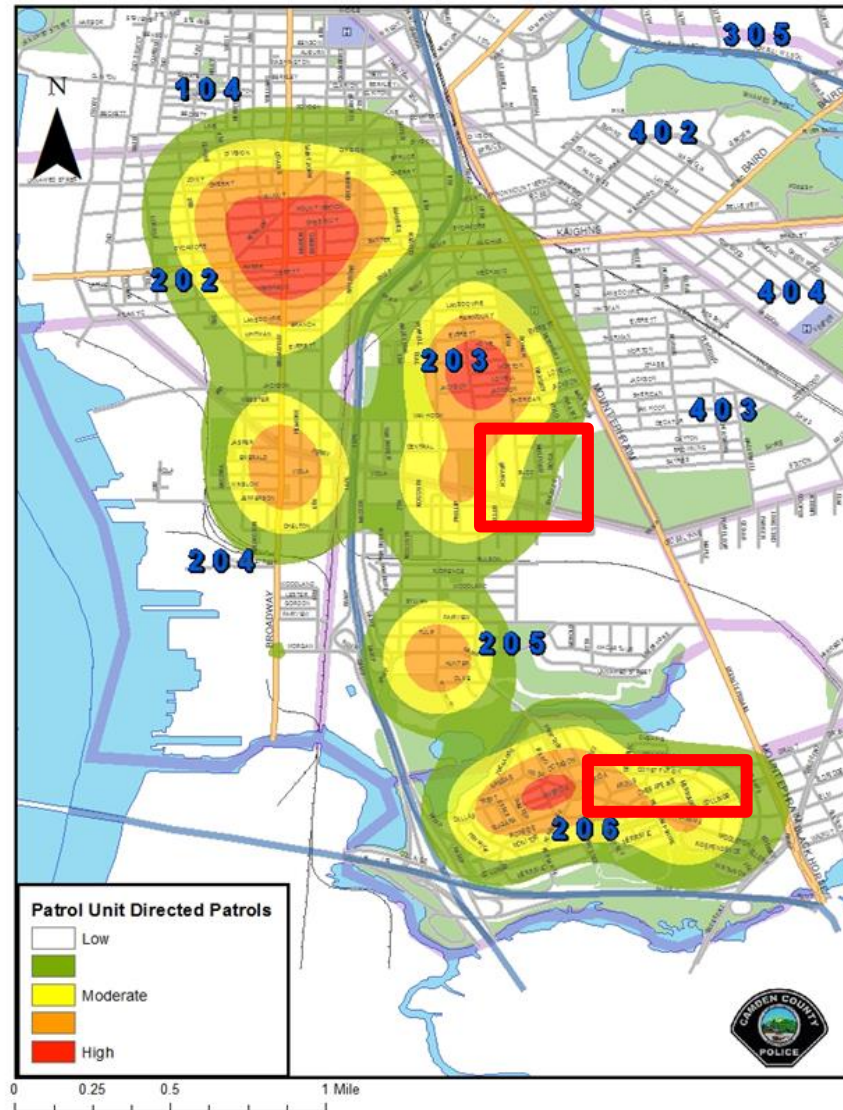
Examine violent crime indicator calls-for-service to assist in predicting problem locations

- Leveraging ALPR data when hotspots arise



# Increase Proactive Activity

- Align deployment with where crime is occurring
- Analyze week to week whether the officers are conducting proactive activities in the correct areas





# Offender Focused

- Leveraging Field Contact & Motor Vehicle Stop Data
  - WHO are the officers contacting?
  - WHERE are they contacting them?
  - WHAT vehicle are they associated with?
  - WHEN are they being contacted?



# Implementing Crime Analysis

---



# Finding the Right Fit

## Civilian

- Academic training
- Data-driven
- Skilled in new technologies
- Analytical mindset

## Sworn

- Police academy training
- Policy driven
- Skilled in street intelligence
- Patrol / investigative mindset

# Hiring an Analyst

- Reach out to local universities
- Use online resources
  - [www.iaca.net](http://www.iaca.net)
  - [www.ialeia.org](http://www.ialeia.org)
- Create both scenario-based and personality-based interview questions
  - Diverse interview panel

# Sustainability of the Analytical Unit

Provide proper training

Establish a civilian crime analysis manager

Find high ranking sworn members who embrace data-driven products

Give the analysts potential growth opportunities

Centralization vs. Decentralization

Develop policies and processes that reference the analytical unit

# Recommendations for Implementing Data Analytics

- Invest in a robust Records Management System / Data Warehouse
  - Data that “speaks the same language”
- Trusting Technology
  - Results from data-driven approaches will increase trust
- Civilian Crime Analysts
  - Capitalize on the analytical team and support the working relationship between civilian and sworn members



# Resources

## Analytic Tools

- Accessdata (Forensic Tool Kit) [www.accessdata.com](http://www.accessdata.com)
- Accurint
- Adobe Photoshop
- Amped Software Products
- ArcGIS Mapping
- ArcGIS Online (Online Interactive Maps)
- Audacity
- Autopsy (SANS) this is a Free forensic tool ([sleuthkit.org](http://sleuthkit.org))
- Blacklight (This is predominantly for MACs) [www.blackbagtech.com](http://www.blackbagtech.com)
- CarFax for Police
- Cellebrite
- CLEAR
- Crystal Reports
- Dcode (Technical time conversion)
- Encase (Guidance Software)
- eTrace (Firearms Tracing)
- ffmpeg (convert video)
- Forensic Explorer ([forensicexplorer.com](http://forensicexplorer.com))
- Google Earth
- HIDTA PIMS Facial Recognition
- i2 Analyst Notebook
- ISO ClaimSearch
- JABS (US Marshall Prison Search)
- Leads Online
- Leap
- LENS (Federal)
- Microsoft Movie Maker
- Microsoft Office
- NDCAC Tools
- NDEX (National Data Exchange - FBI)
- N-Force (ATF Database)
- Notepad++
- Office's Case management system
- Oxygen (Phone Analysis) [www.oxygen-forensic.com/en/products/oxygen-forensic-detective](http://www.oxygen-forensic.com/en/products/oxygen-forensic-detective)
- Palantir
- Pen-Link
- Perceptive Workgroup Search
- PerpHound (NW3C)
- Python
- qGIS
- R
- ShotSpotter
- Snagit
- Spotlight
- Surveillance Players
- Thunderbird (Mozilla email client - handling SW compliance)
- TLOxp
- Truecrypt/Veracrypt
- Voyager
- VLC Video Player
- XI Search
- XI Social Discovery
- Xanalis Link Explorer
- XMind

## Analytic Tools

## List of Trainings for Crime Analysts

### Law Enforcement/Analyst

- Open Source Intelligence (Training & free tools)
  - <https://inteltechniques.com/>
  - <https://www.toddington.com/>
  - <http://www.automatingosint.com/blog/> (programming focused)
- FBI LEEP (cyber classes) <http://www.iacpcybercenter.org/topics/training-2/> (free-training-for-law-enforcement/)
- National White Collar Crime Center (NW3C) <https://www.nw3c.org/online-training>
- National Domestic Communications Assistance Center
  - <https://ndcac.fbi.gov/>
  - [AskNDCAC@fbi.gov](mailto:AskNDCAC@fbi.gov)
- Northeast Counterdrug Training Center
- SEARCH Online Investigations (<http://www.search.org/>)
- SANS, CCE Boot camps (different vendors offer this), all the Forensic companies offer training for their own product so use what is familiar for you.
- National Computer Forensics Institute (<https://www.ncfi.usss.gov/ncfi/>)
- Federal Law Enforcement Training Center (<https://www.fletc.gov/>)
- High Intensity Drug Trafficking Area (HIDTA)
  - Los Angeles HIDTA - Instruq (<https://instruq.co/>)

### Excel (free)

- <https://excelexposure.com/>
- <https://www.gcflearnfree.org/excel2016/>
- <https://support.office.com/en-us/excel>
- <https://exceljet.net/>
- YouTube (excel tutorial playlists, specific tasks, etc.)

### Programming

- Organized:
  - General Assembly - boot camp
  - Coding Classes - general
- Self-help (general - many are free):
  - Lynda
  - Udemy
  - Skillsshare
  - Khan Academy
  - Code Academy
  - Coursera
  - YouTube

## List of Trainings

## Data Management Techniques

- Regular Expressions:
  - Searching for patterns rather than specific text (ex. phone numbers, emails, addresses, etc.):
    - <https://regex101.com/> -- learn and test regular expressions
    - <https://spreadys.wordpress.com/> (forensic video blog relating to surveillance video)
    - <http://www.search.org/resources/e-crime-investigative-tools/>
    - <http://www.search.org/resources/publications/law-enforcement-tech-guides/>
  - VBA for automating Microsoft Office tasks (Excel, Word, Outlook, etc.)
- Remember techniques are based on the type of case and where data may exist on a device (think as if you are the end user)

## Excel Shortcuts

- ctrl + arrow = jump to the end of a section
- shift + arrow = extend selection by one cell
- ctrl + shift + arrow = extend selection to end
- ctrl + a = select all
- ctrl + shift + l = toggle filters on/off
- ctrl + c = copy
- ctrl + x = cut
- ctrl + v = paste
- ctrl + alt + v = paste special
- F2 = jump into a cell to edit it
- F4 = toggle relative/absolute references for a range
- ctrl + ; = enter current date

## Data Management Techniques

# *Questions?*

---

# RVCRI Grantee Presentations

- Describe your agency and community.
- What prompted you to apply for RVCRI funding?
- Summarize your RVCRI program and work accomplished to date.
- Discuss any challenges or successes realized/accomplished to date.
- Outline sustainability planning.



# Open Discussion

- Reminder: Event Survey



# What's Next?

- Sexual Assault & Intimate Partner Violence Investigations Webinar, scheduled for Thursday, August 17<sup>th</sup> (additional details to follow).
- Next roundtable scheduled for Thursday, November 9<sup>th</sup> (additional details to follow).