

RURAL LSC

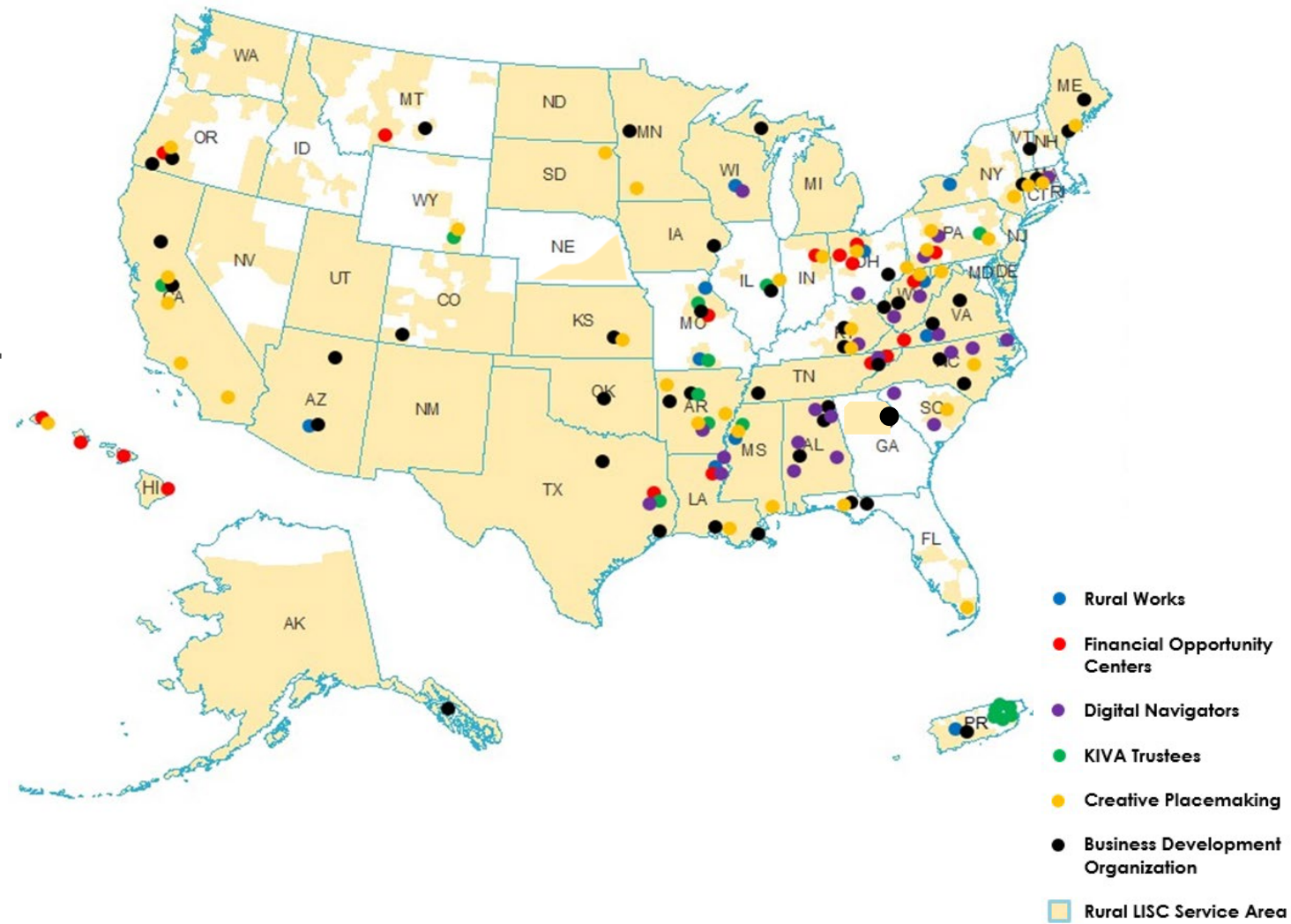
We Believe in Rural America



For over 25 years Rural LISC has worked with and through grassroots partners located in rural communities and regions.

We are a **connector** and **cross-pollinator** for our partners, linking them to national opportunities, to each other and aggregating resources they might not otherwise access without our network.

Working closely with partners helps us cover a large national footprint.



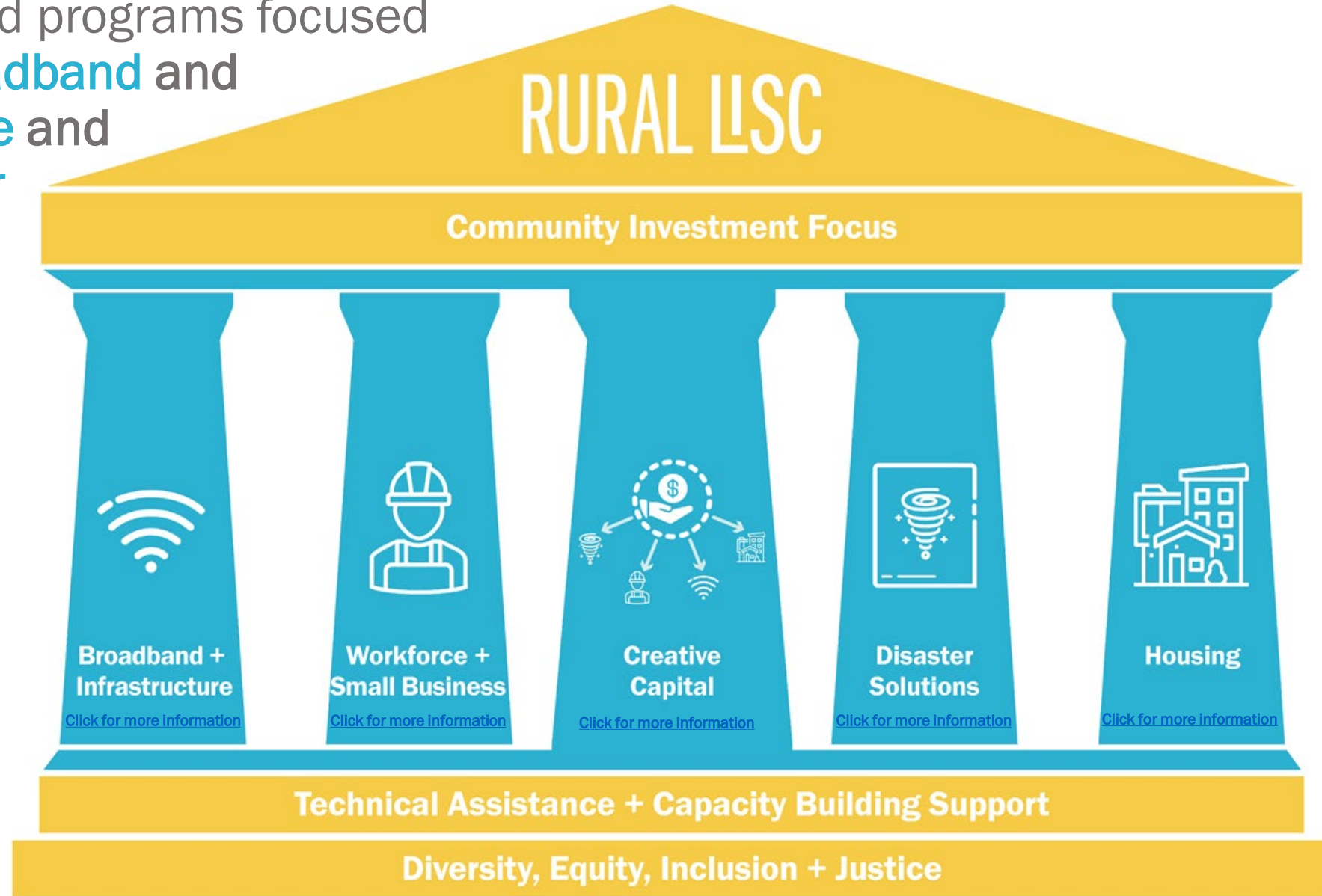
***150+ local partners across 49 states and Puerto Rico**

[Click here](#) to view our interactive partner map.

Our Programmatic Priorities

Rural LISC strives to identify priorities and opportunities to **meet local needs** through integrated strategies and programs focused on **creative capital, broadband and infrastructure, workforce and small business, disaster supports, and housing.**

Our work is built on a foundation of **Technical Assistance & Capacity Building Strategies** and intentional **Diversity, Equity, Inclusion, & Justice** practices.



Creative Capital

Providing grants, loans and equity needed to support housing, small businesses and community development projects, particularly those related to the core mission of investing in transformative projects in Rural America.

Since 1995, Rural LISC has invested more than \$2.75 billion in grants, loans, lines of credit, repayable investments and equity into local community development organizations.



Broadband & Infrastructure

Innovating how rural communities integrate digital supports, broadband and other infrastructure needs into the community to increase equity.

Since 2020, 150 Digital Navigators trained in 20 states.

\$28M has been leveraged for rural broadband projects.



Disaster Solutions

Supporting communities through technical assistance and training on how to prepare for, and pivot during and after a disaster (natural, man-made or economic).

Rural LISC has supported hundreds of disaster rebuilding projects, from housing rehabilitation and replacement to small business recovery – our team provides solutions in the short-term and long-term.



Workforce Development

Connecting creative workforce solutions to organizations that empower people to take ownership of their financial future and secure quality jobs. From assessing programmatic tactics to developing strategies for individual employment, our programs extend from planning through delivery.

In 2020, nearly 6,000 individuals were served with workforce development services.



Key Rural LISC programs include:

- ❖ [Rural Works](#)
- ❖ [Financial Opportunity Centers](#)
- ❖ [Bridges to Career Opportunities](#)
- ❖ [Small Business Development Organizations \(BDO Network\)](#)

Housing

Ensuring our partners have the **financing, knowledge, and technical resources** needed to create affordable housing opportunities and foster communities that incorporate a sense of pride, place, and livability.

Since 1995, Rural LISC has supported the development of more than 52,000 affordable housing units.



When you partner with Rural LISC...



Local community organizations increase their capacity and knowledge.



Funding is leveraged from all levels for community-based solutions.



Small businesses become long-term community staples.



Families become home owners.



Communities rebuild and recover after disasters.



Communities close the digital equity gap.



Individuals and families increase their net income and net worth.



Individuals increase their job skills and career advancements

Capacity Building

For more than 40 years, LISC has been a trusted leader in providing expert-level support to local community organizations across the country. From organizational development grants that assist community organizations to improve its administrative structures, management and financial systems, and real estate development to strategic planning grants or seed capital to cover costs associated with the creation of new programs that are important to an organization's overall mission and needs of the community's residents, our role is to meet a partner where they are and support their community development goals.



Rural LISC has mobilized \$582.2 million in grants and loans for partner organizations, with an additional \$2.17 billion in affiliate financing.

\$2.75 billion has been committed in and through partner organizations, including \$99.9 million in capacity building grants.

Diversity, Equity, Inclusion, Justice

Diversity, Equity, Inclusion and Justice are the core values that encompass the cornerstone of who we are, what we do, how we measure impact, with whom we partner, how we earn trust, and show up in our community. Rural LISC values listening to and engaging neighborhood residents and community members, and incorporating their input and feedback into the design, creation, and execution of LISC's work.

We will strive to cultivate leadership, organizational capacity and technical skills of residents, practitioners and community-based organizations to help make life outcomes more equitable; and to support and expand the impact of BIPOC leadership, identify and counteract systemic racism, and foster partnerships to advance systems change and racial justice in rural America.



When Rural LISC works in a community, all available resources are deployed at all levels of a community's development plan.

Rural LISC resources are integrated and are proven to leverage funding and partnerships for continued community development.

A holistic and comprehensive approach is taken with every community.

Wealth Building: Rural LISC's Financial Opportunity Center network works to increase the financial well-being of individuals and families, with 60% of their clients increasing their net income and 68% increasing their net worth in 2022.

Local Government: LISC runs the U.S. HUD Distressed Cities Technical Assistance program, investing more than \$12M in small units of local government to increase their internal capacity and address barriers to community development.

Broadband and Infrastructure: Rural LISC works with community leaders, elected officials and stakeholders to map out a community's broadband and infrastructure needs, and how to maximize on historic public dollar investments coming into rural communities today. In the last year, \$80M has been leveraged for rural broadband projects.

Regional Employers: Rural LISC's workforce development programming strengthens a rural community's workforce ecosystem. Since 2021, Rural Works resulted in more than 3,500 job placements, leveraging more than \$12M in additional supports.

Housing: Since 1995, Rural LISC has supported the development and preservation of 52,904 affordable homes across the Rural LISC network. LISC and its affiliates have invested more than \$2.75B in grants, loans, lines of credit, recoverable investments, and equity for the development of affordable housing.

Commercial and Community Property: 8.8M square feet of commercial and community facilities has been built through creative capital projects across the Rural LISC network.

Capacity Building: To date, Rural LISC has deployed more than \$2.75B to partner organizations, including \$99.9M in capacity building grants for local community-based partners.

Community Anchors: Rural LISC has trained 120 Digital Connectors with anchor institutions like rural libraries and community-based organizations. These hubs help residents get connected to low-cost Internet and devices, resulting in enhanced digital skills.

Small Business: Since 2020, Rural LISC has helped keep rural Main Street open for business by providing more than \$40M in grants, capital, and technical assistance to a variety of small businesses.



Thank you!