

*Greetings From*

# ENVISION HOUSTON

## STATE OF COMMUNITIES DIALOGUE

January 10, 2024

Federal Reserve Bank of Dallas – Houston Branch

*welcome*

**LSC HOUSTON**



LinkedIn

# welcome



**C.J. EISENBARTH  
HAGER**

Assistant Vice President,  
Innovation and Integration  
Episcopal Health Foundation



**DONALD  
BOWERS**

Vice President

Federal Reserve Bank of Dallas –  
Houston Branch



**LAURA R.  
JARAMILLO**

Executive Director

LISC Houston



**MICHAEL  
PUGH**

Chief Executive Officer

LISC

**LISC HOUSTON**





**Chris Shreck**

Community Engagement  
Manager

Federal Reserve Bank of Dallas –  
Houston Branch



**Donald Bowers**

Vice President

Federal Reserve Bank of Dallas –  
Houston Branch

# Dialogue on the State of the Economy

**LLSC HOUSTON**



Greetings People

LET'S  
BREAK



**WiFi:** Username: lhouston | Password: C&Qy58vy

LSC HOUSTON

LinkedIn





ENVISION HOUSTON  
STATE OF COMMUNITIES  
DIALOGUE

JANUARY 10, 2024  
FEDERAL RESERVE BANK OF  
DALLAS - HOUSTON

LISC HOUSTON



# Dialogue on the State of Communities

**Rushka Tcholakova**

Director, Community Programs

LISC Houston

**LISC HOUSTON** 

5

MIN

# What Would You Transform?

**WiFi:** Username: lhouston | Password: C&Qy58vy

**LSC HOUSTON**



# Methodology



Phase 1  
Survey

(June)



Phase 2  
Virtual Focus Groups

(August)



Phase 3  
Multidisciplinary Stakeholder  
Conversations

(November)



Phase 4  
Greater Houston State of  
Communities Convening

(January)

Envision Houston Paper



LinkedIn



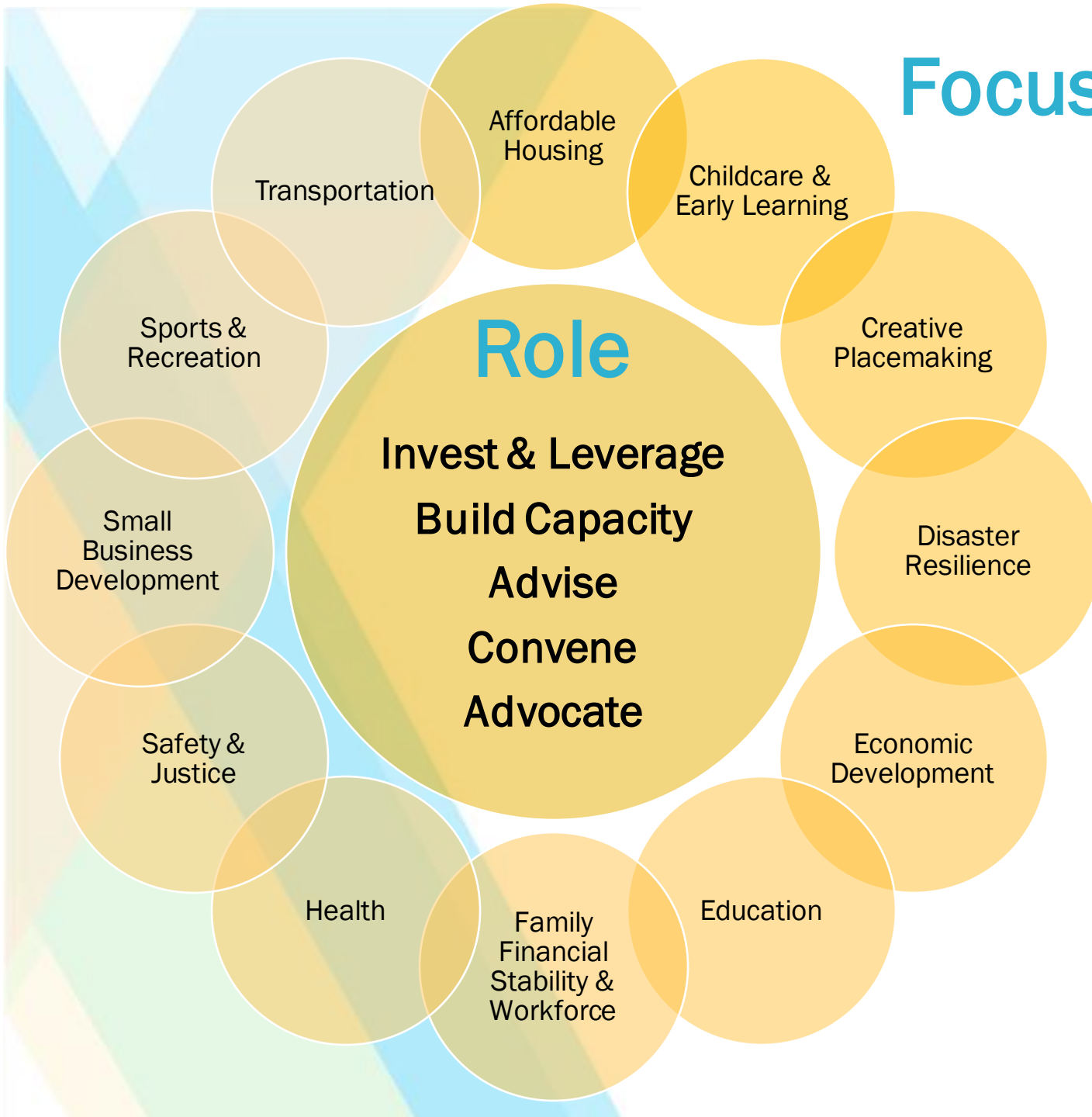


# Focus Areas



## Interventions

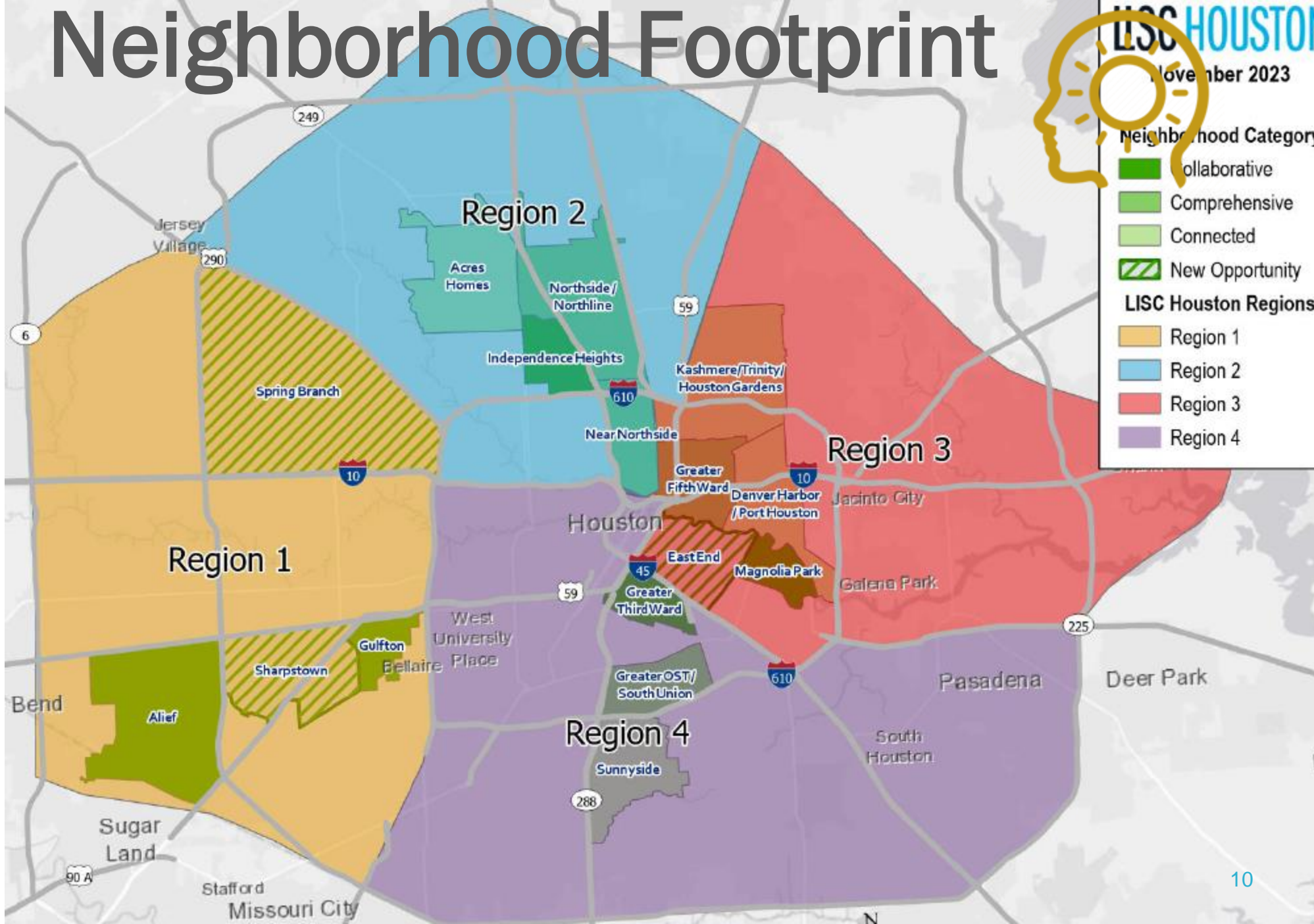
1. Investment loans
2. Knowledge & Change Management
3. Cross-Sector Collaboration
4. Talent Acquisition & Retention
5. Community & Resident Engagement
6. Share Community's Needs & Strengths
7. Coordination of Services



# Neighborhood Footprint



- Neighborhood Category
- Collaborative
  - Comprehensive
  - Connected
  - New Opportunity
- LISC Houston Regions
- Region 1
  - Region 2
  - Region 3
  - Region 4



**Region 1:** Alief, Gulfton, Sharpstown, Spring Branch

**Region 2:** Acres Homes, Independence Heights, Near Northside, Northline, Eastex Jensen

**Region 3:** Fifth Ward, Kashmere/Trinity/Houston Gardens, Channelview/North Shore, Denver Harbor/Port Houston, Magnolia Park, East End

**Region 4:** Greater Third Ward, South Acres, Sunnyside, OST/South Union

# Houston Snapshot

## TOP FOCUS AREA PRIORITIES

- Family Financial Stability & Workforce Development
- Affordable Housing
- Economic Development
- Transportation
- Safety and Justice
- Disaster Resilience
- Small Business Development & Support

## TOP INTERVENTIONS



## TOP ROLE

- Invest & leverage
- Build organizational & ecosystem capacity
- Convene

**LSC HOUSTON**



# Top of Mind

## Gentrification Concerns:

- Risk of Displacement & Wealth Disparities
- Erosion of Historical Culture

## Population Dynamics:

- Racial Disparities & Youthful Demographic
- Substantial Immigrant & Refugee Influx
- Language Barriers & Workforce Disparities

## Housing Issues:

- Soaring Costs
- Escalating Evictions
- Shortage of Affordable Options

## Economic Woes:

- High Inflation & Underemployment
- Educational Disparities Affecting Prosperity

## Community Development Hurdles:

- Neglected Infrastructure & Fragmented Transportation
- Limited Access to Essential Services & Revitalization Incentives

## Disaster Preparedness:

- Heightened Community Vulnerabilities

# Top of Mind

## Challenges & Goals:

- Overcoming Competition Among Groups
- Collaborative Funding Models for Equitable Resource Allocation
- Seamless Accessibility Within & Beyond Neighborhoods

## Key to Progress:

- Agencies & Groups Working Hand in Hand
- Public & Private Sectors Uniting for Common Goals
- Capacity Building for Disaster Resilience

## Shared Desire for Progress:

- Strengthen Local Economy & Financial Stability
- Need for Early Learning Centers & English Learning Support
- Funding Boost for Small Businesses & Improved Transportation

## Investment Plan:

- Wealth-Building Initiatives
- Aligning Work Opportunities with Community Needs

# Top Areas of Focus & Interventions

## TOP INTERVENTIONS

- Increased cross-sector collaborations
- More community and resident engagement
- Stronger coordination of services among community organizations

## TOP FOCUS AREA PRIORITIES

- Family Financial Stability & Workforce Development
- Affordable Housing
- Economic Development
- Safety and Justice
- Disaster Resilience
- Small Business
- Childcare and Early Learning
- Education



# Top of Mind

## Gentrification Tensions:

- Sparking Tensions & Reduced Job Access Due to Gentrification
- Impact of City Ordinance Enforcement on Residents

## Housing Disparities:

- High Costs vs. Low Incomes Creating Disparities
- Slumlords, High Rents & Deteriorating Homes

## Challenges Across Domains:

- Limited Access to Healthy Foods & Quality Education
- Lack of Public Transportation Access
- Senior Population Reliance on Tax Exemptions
- Lack of Affordable Childcare & Pandemic-Related Workforce Reductions
- Hindrances due to School Leadership Transitions

# Top of Mind

## **Workforce & Education Reforms:**

- Addressing Skill Gaps & Motivation
- Trauma in Education
- Fostering Stable Community-School Relationships

## **Public Housing & Smart Growth:**

- Expanding Tools & Aligning Development with Basic Needs

## **Collaboration & Advocacy:**

- City-Expert Collaboration for Affordable Housing
- Advocacy for Economic Development & Financial Stability

## **Collective Impact & Disaster Resilience:**

- Fostering Collaborations & Information Sharing
- Capacity Building for Quick Disaster Response & Recovery





# Top Areas of Focus & Interventions

## TOP FOCUS AREA PRIORITIES

- Family Financial Stability & Workforce Development
- Affordable Housing
- Economic Development
- Safety and Justice
- Disaster Resilience
- Small Business Development & Support
- Education (K-12)
- Health (access & affordability)

## TOP INTERVENTIONS

- More community and resident engagement
- Stronger coordination of services amongst local community organizations
- Increased cross-sector collaborations
- Access to more investment loans for community development



# Top of Mind

## **Gentrification Concerns:**

- Displacement, Limited Social Services & Early Education

## **Educational Challenges:**

- Low Attainment, Cultural Priorities & Access Barriers

## **Housing & Childcare Issues:**

- Affordability Crisis & Lack of Facilities

## **Distinct Neighborhood Challenges:**

- Stagnant Wages, Transportation Barriers, Environmental & Healthcare Concerns

# Top of Mind

## **Economic Development & Workforce Initiatives:**

- Support Small Businesses & Retain Workforce

## **Addressing Economic Gaps & Basic Needs:**

- Food, Housing, Safety, and Recreational Programs

## **Community Spaces & Social Networks:**

- Foster Social Connectivity & Mental Health Support

## **Neighborhood-Specific Strategies:**

- Workforce Development, Health Impact, & Placemaking Solutions

## **Desire for Collaboration & Resilience**

- Bridging Social Networks & Shared Success
- Encourage Collaboration & Neighborhood Connectivity
- Building for Quick Disaster Response & Recovery
- Resilience



# Top Areas of Focus & Interventions

## TOP FOCUS AREA PRIORITIES

- Family Financial Stability & Workforce Development
- Affordable Housing
- Economic Development
- Disaster Resilience
- Small Business Development & Support
- Education (K-12)
- Health (access & affordability)
- Childcare and Early Learning

## TOP INTERVENTIONS

- Stronger coordination of services amongst local community organizations
- Access to more investment loans for community development
- Investments in talent acquisition and retention
- Cross-sector collaborations



# Top of Mind

## **Gentrification Tensions:**

- Bridging Legacy & New Resident Disparities
- Communication Gaps

## **Economic Woes:**

- Predatory Lending
- Low Paying Jobs/Underemployment

## **Housing & Childcare Issues:**

- Affordability Crisis
- Housing Choice Voucher Reforms

## **Distinct Neighborhood Challenges:**

- Safety & Lighting Issues, Transportation Deficiencies, Food Desserts & Childcare Accessibility



# Top of Mind

## Income-Based Services:

- Tailored support for lending and high-paying work access

## Technology Access:

- Bridging the digital divide for employability & entrepreneurship

## Justice-Challenged Employment Ministries:

- Community reintegration & reduced recidivism

## Early Childhood Literacy:

- Foundation for education & skill-building for success

## After-School Care:

- Supporting working families & youth development

## Capacity Building for Quick Disaster Response & Recovery



# Top Areas of Focus & Interventions

## TOP FOCUS AREA PRIORITIES

- Family Financial Stability & Workforce Development
- Affordable Housing
- Economic Development
- Disaster Resilience
- Small Business Development & Support
- Transportation
- Health (access & affordability)

## TOP INTERVENTIONS

- More community and resident engagement
- Stronger coordination of services amongst local community organizations
- Increased cross-sector collaborations
- Access to more investment loans for community development



# Leaders & Coalitions

Key subject matter experts, related service providers, or key interest groups identified as relevant to this region in making progress.

Key subject matter experts, related service providers, or key interest groups which the community identified as relevant to this region in making progress.

AAPI Cor  
ACAM  
Baker Ri  
Chinese  
Connect

Key subject matter experts, related service providers, or key interest groups identified as relevant to this region in making progress.

Key subject matter experts, related service providers, or key interest groups which the community identified as relevant to this region in making progress.

Alief Sup  
Alief Vol  
Develop  
District J  
Chambe

Cadence Bank  
City of Houston - Health  
City of Houston - Housing & Community Development  
Emancipation Economic Development Council  
HAR - Houston Association of Realtors  
Harris Health  
Houston Community Land Trust  
Houston Land Bank

AAMA  
Air Alliance  
Baker Ripley  
City of Houston - Office of Business Opportunity  
Community & Family Centers  
Community Colleges  
Federally Qualified Health Centers  
Fifth Ward CRC  
Government Organizations  
Habitat for Humanity

Access health  
Art in the Heart HTX  
Houston Community College  
Houston Land Bank  
Houston Parks Board  
ISDs – educational attainment and job training  
Legacy Health  
Medical & Religious Institutions  
New Hope Housing  
Port of Houston  
Precinct 2  
SER Jobs

John Branch  
Legacy  
Texas Workforce Board  
The Alliance  
St. Episcopal Healthcare  
Tejano Center  
Texas Medical Center  
Institution  
The North Action Collective  
The Plant  
TXRX Labs  
UH Medical School  
UofH College of Medicine  
UT Public School of Health

Current Active Coalitions, Workgroups, and Taskforces

Current Active Coalitions, Workgroups, and Taskforces

BE Well  
Center for Civic & Public Policy Improvement  
Collective Action for Youth  
Community Loan Center  
Complete Communities Developers  
District B United (civic engagement)  
Dream 77021 Collaborative  
Faith in Action  
Friends of Alameda  
Friends of McGregor park  
GO steering committee

Great  
Host  
Hou  
ION  
Mat  
Neig  
GO  
Nort  
Clar  
Proj  
OHII  
Prov  
St F  
Colk  
Fifth Ward CRC -GO  
Neighborhoods  
Buffalo Bayou Partnership  
Coalition for Environment, Equity, and Resilience (CEER)  
Community Voices for Public Education  
CUT – Center for Urban Transportation  
East End Alliance

East End Bicycle Advisory Committee  
East End Chamber  
East End Community Coalition  
East End District  
East End Rail Task Force (safety)  
East River Project  
EHCEC host LINK every other month (Local Integrated Network of Knowledge)

Emerge Developers  
Friends of El Salvador  
Kashmere Gardens Super Neighborhood Council #52  
LINK Houston  
Northeast Houston Collaborative  
Northeast Houston Redevelopment Council  
West Street Recover



# Recommendations

- Funders
- Government
- Corporations
- Community Based Organizations
- Academia
- Healthcare
- Economic Development
- Transportation



10  
MIN



For the next ten minutes, with your tablemates, pull up the report (scroll to the end) and select one category of stakeholder recommendations to review together, and reflect - based on what you heard and your lived experience - if there are any you would consider priority or if your table has new ideas.

**LSC HOUSTON**





# What Would You Transform?

**LSC HOUSTON**



*Greetings People*  
#LISCHouston

# LUNCH BREAK



LISC HOUSTON



LinkedIn



# Dr. Ruth Simmons

## Keynote Speaker

**LLSC HOUSTON**

# Dialogue Economic Development



**TONY  
PATHYIL**  
Program Officer,  
Economic  
Development



**Ernest  
Lewis, III**  
Sr. Director  
Economic  
Initiatives  
Baker Ripley



**Peter  
Beard**  
Sr. Vice  
President  
Greater  
Houston  
Partnership



**Grace  
Rodriguez**  
Executive  
Director  
Impact Hub



**Omar  
Fortune**  
Senior Manager  
Houston-  
Galveston Area  
Council



**Alicia  
Neal**  
Executive  
Director  
EEDC



**Taylor  
Marcantel**  
Transit Oriented  
Development (TOD)  
Program Manager  
Metropolitan Transit  
Authority of Harris  
County (METRO)

# Dialogue Economic Development



**Ellary  
Makuch**

Program Officer,  
Economic Development

**Jessica  
Pugil**

Principal &  
Founder  
The Working  
Partner

**Amy  
Corron**

Executive  
Director  
Wesley  
Community  
Center

**LaSonya  
Bishop**

Director of  
Workforce  
Development  
Volunteers of  
America TX

**Chi-Mei  
Lin**

Chief Executive  
Officer  
Chinese Community  
Center

**Margaret  
Oser**

Vice President, Mission  
and Strategy, United  
Way of Greater  
Houston

*Greetings People*

#LISCHouston

**LET'S  
BREAK**



**LISC HOUSTON**



LinkedIn

# Dialogue Community Development



**CAROLYN  
ANDREWS**

Program Officer,  
Community  
Development



**SHANNON  
BUGGS**

Founding Director of  
the Mayor's Office of  
Complete  
Communities  
(MOCC), City of  
Houston



**MARY  
LAWLER**

Executive Director  
Avenue Community  
Development  
Corporation



**KATHY  
PAYTON**

President and  
CEO, Fifth Ward  
Community  
Redevelopment  
Corporation



**PAUL  
CHARLES**

Executive Director  
Neighborhood Recovery  
Community  
Development  
Corporation



# Dialogue Housing Development



**JASON  
GRANT**

Program Officer, Housing  
& Strategic Initiatives



**KEVIN  
RILES**

Real Estate Broker



**SAUL  
VALENTIN**

Founding Principal  
Collaborate



**ZION ESCOBAR**

Founder & CEO  
Freedmen's Town  
Community Investment  
Project



**Joe Horiye**

**Program Vice President  
LISC**

**LISC HOUSTON**

# CONNECT WITH US

# LISC HOUSTON



X [@LISC\\_Houston](#)

f [@LISC.houston](#)



NEWSLETTER SIGN UP

LINKEDIN FOLLOW

Local Initiatives Support Corporation

602 Sawyer Street, Suite 205, Houston, TX 77007 • 713.334.5700 •

[lisc.org/houston](http://lisc.org/houston)